

600x1200mm | GVT
Matt Series

matt
series



touch has a
memory

More clean and chic finish across
the entire surface leaving no imprints.





restaurants



spa-wellness



big projects



shops/
offices



living



bathroom



kitchen



children-
friendly
spaces



live your style everywhere


With Design Your Slabs you can implement your creative ideas anywhere, with the guarantee of obtaining the maximum results from an aesthetic and technical perspective. In interior spaces, to give colour, character and personality to commercial and residential environments and in places dedicated to hospitality, entertainment and conviviality; in particularly wet areas such as spas, and wellness centres, and outdoors, with the creation of attractive façades, walls or other interventions with a surprising and long-lasting decorative impact.



first
emotional
comfort

reduced glare to
enhance the aesthetic
appearance for
classic touch.



-  high strength
-  eco friendly
-  random design
-  low maintenance



**marvel
stone white**



**600x
1200mm**





marvel stone white

**600x
1200mm**



 Thickness : **9mm**

 Finish: **MATT**

 HIGH STRENGTH

 ECO FRIENDLY

 RANDOM DESIGN

 LOW MAINTENANCE



marvel stone
white & grey

marvel
stone grey



600x
1200mm





marvel stone grey

600x
1200mm



 Thickness : **9mm**

 Finish: **MATT**

 HIGH STRENGTH

 ECO FRIENDLY

 RANDOM DESIGN

 LOW MAINTENANCE



marvel stone
white & grey

**marvel
stone crema**

**600x
1200mm**







marvel stone crema

**600x
1200mm**




 Thickness : **9mm**

 Finish: **MATT**

 HIGH STRENGTH

 ECO FRIENDLY

 RANDOM DESIGN

 LOW MAINTENANCE



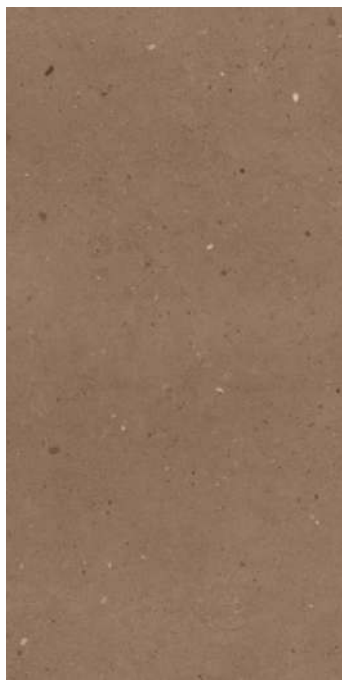
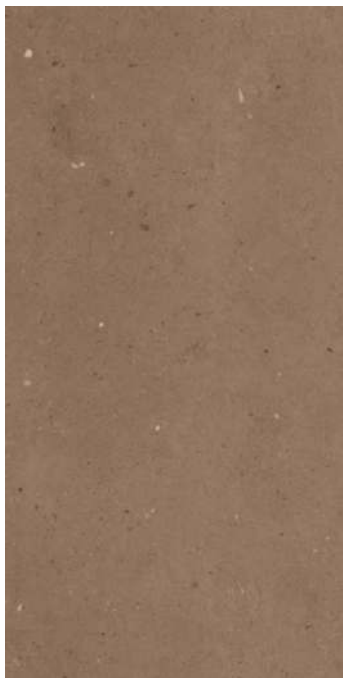
marvel stone
crema & bronze

**marvel
stone bronze**



**600x
1200mm**






marvel stone bronze

**600x
1200mm**



 Thickness : **9mm**

 Finish: **MATT**

 HIGH STRENGTH

 ECO FRIENDLY

 RANDOM DESIGN

 LOW MAINTENANCE



marvel stone
crema & bronze

**marvel
stone bianco**



**600x
1200mm**





marvel stone bianco

600x
1200mm




 Thickness : **9mm**

 Finish: **MATT**

 HIGH STRENGTH

 ECO FRIENDLY

 RANDOM DESIGN

 LOW MAINTENANCE



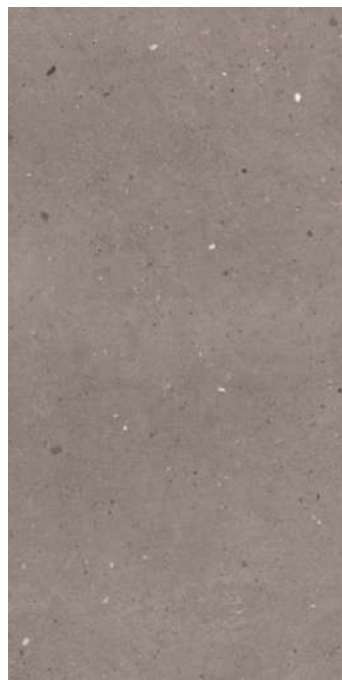
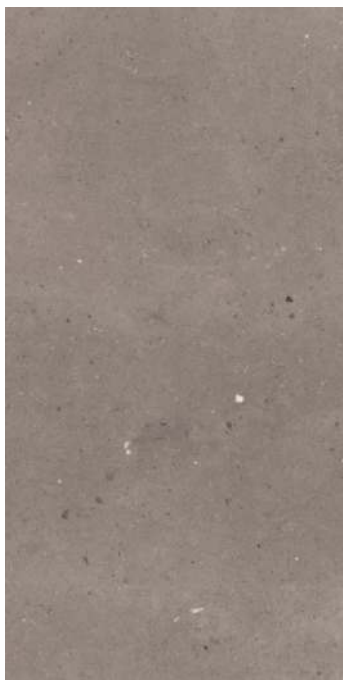
marvel stone
bianco

**marvel
stone choco**



**600x
1200mm**





marvel stone choco

**600x
1200mm**




 Thickness : **9mm**

 Finish: **MATT**

 HIGH STRENGTH

 ECO FRIENDLY

 RANDOM DESIGN

 LOW MAINTENANCE

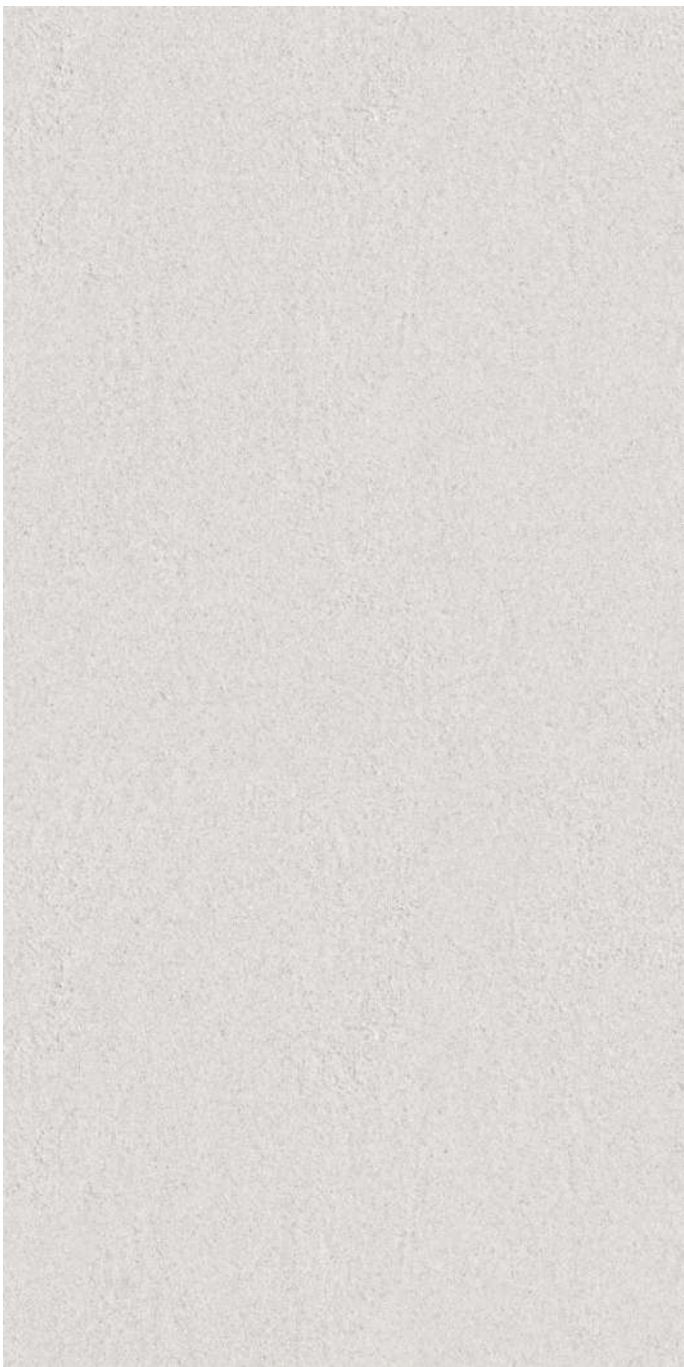


marvel stone
choco

**sandy
white**

**600x
1200mm**





sandy white

**600x
1200mm**




 Thickness : **9mm**

 Finish: **MATT**

 HIGH STRENGTH

 ECO FRIENDLY

 RANDOM DESIGN

 LOW MAINTENANCE

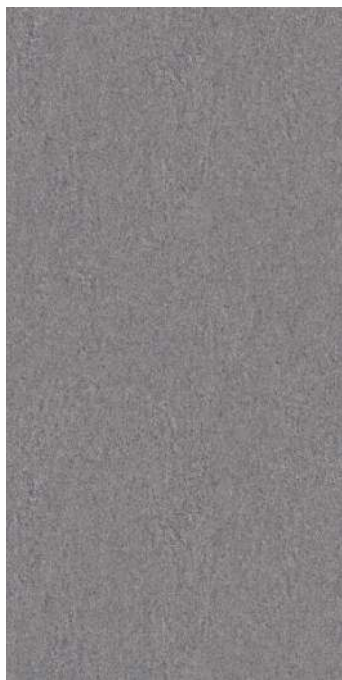
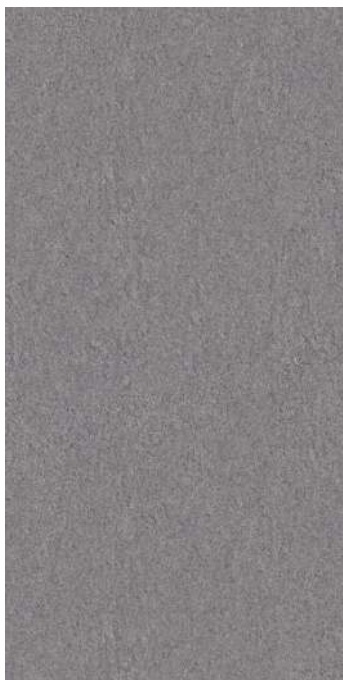
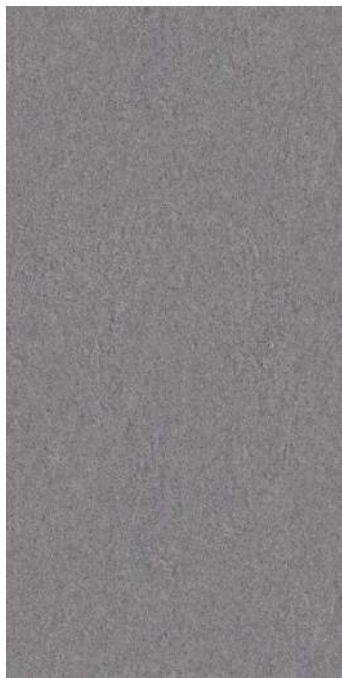
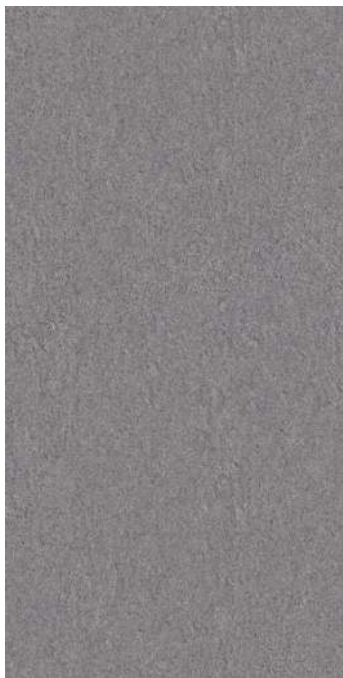


sandy
white

**sandy
black**

**600x
1200mm**






sandy black

**600x
1200mm**




 Thickness : **9mm**

 Finish: **MATT**

 HIGH STRENGTH

 ECO FRIENDLY

 RANDOM DESIGN

 LOW MAINTENANCE

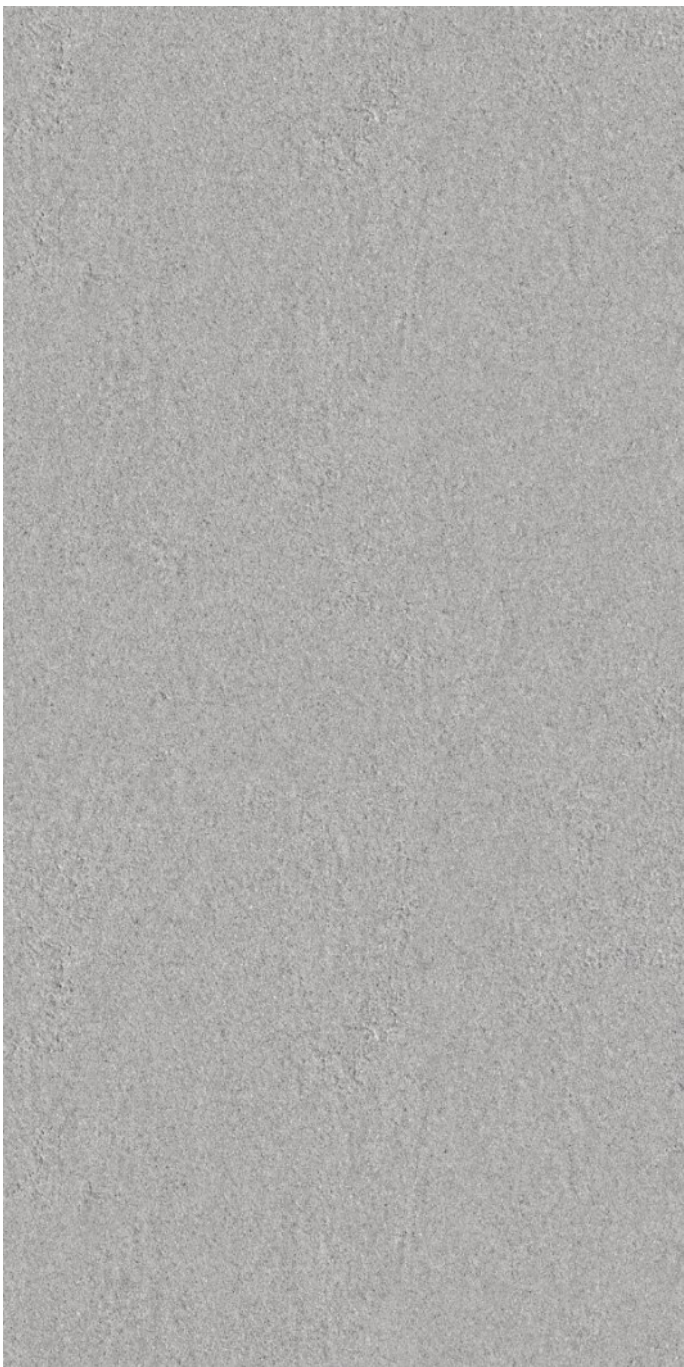


sandy
black

**sandy
grey**

**600x
1200mm**






sandy grey

**600x
1200mm**




 Thickness : **9mm**

 Finish: **MATT**

 HIGH STRENGTH

 ECO FRIENDLY

 RANDOM DESIGN

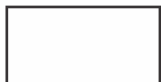
 LOW MAINTENANCE



sandy
grey

**sandy
crema**

**600x
1200mm**





sandy crema

**600x
1200mm**




 Thickness : **9mm**

 Finish: **MATT**

 HIGH STRENGTH

 ECO FRIENDLY

 RANDOM DESIGN

 LOW MAINTENANCE

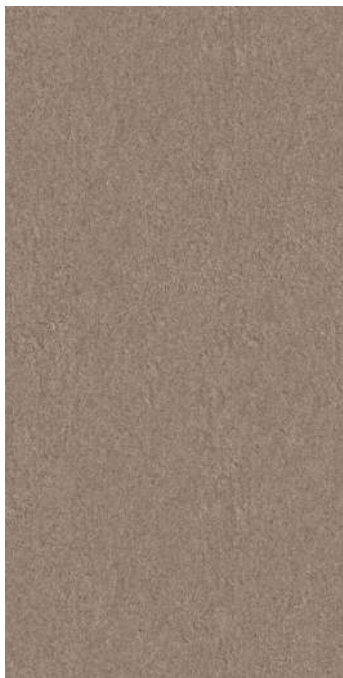


sandy
crema & choco

**sandy
choco**

**600x
1200mm**





sandy choco

**600x
1200mm**




 Thickness : **9mm**

 Finish: **MATT**

 HIGH STRENGTH

 ECO FRIENDLY

 RANDOM DESIGN

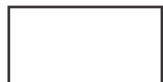
 LOW MAINTENANCE



sandy
crema & choco

**sandy
gold**

**600x
1200mm**





sandy gold

**600x
1200mm**




 Thickness : **9mm**

 Finish: **MATT**

 HIGH STRENGTH

 ECO FRIENDLY

 RANDOM DESIGN

 LOW MAINTENANCE



sandy
gold

**rocker
grafite**

**600x
1200mm**





rocker grafite

600x
1200mm



 Thickness : **9mm**

 Finish: **MATT**

 HIGH STRENGTH

 ECO FRIENDLY

 RANDOM DESIGN

 LOW MAINTENANCE



rocker
grafite

**rocker
grey**

**600x
1200mm**





rocker grey

**600x
1200mm**




 Thickness : **9mm**

 Finish: **MATT**

 HIGH STRENGTH

 ECO FRIENDLY

 RANDOM DESIGN

 LOW MAINTENANCE



rocker
grey & black

**rocker
black**

**600x
1200mm**





rocker black

**600x
1200mm**



 Thickness : **9mm**

 Finish: **MATT**

 HIGH STRENGTH

 ECO FRIENDLY

 RANDOM DESIGN

 LOW MAINTENANCE



rocker
black

**rocker
ivory**

**600x
1200mm**







rocker ivory

**600x
1200mm**




 Thickness : **9mm**

 Finish: **MATT**

 HIGH STRENGTH

 ECO FRIENDLY

 RANDOM DESIGN

 LOW MAINTENANCE



rocker
ivory & choco

**rocker
choco**

**600x
1200mm**






rocker choco

**600x
1200mm**



 Thickness : **9mm**

 Finish: **MATT**

 HIGH STRENGTH

 ECO FRIENDLY

 RANDOM DESIGN

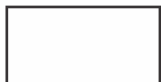
 LOW MAINTENANCE

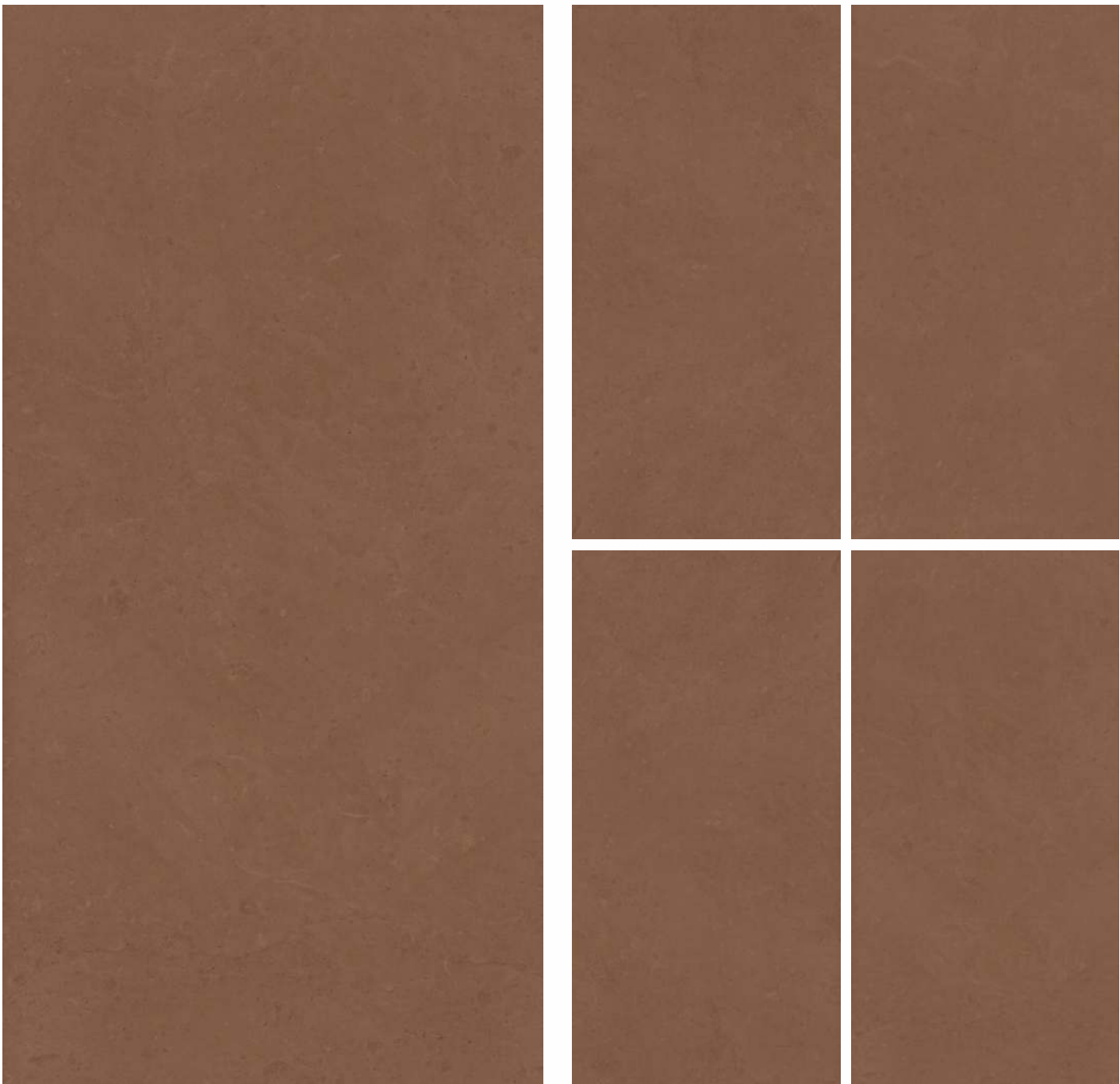


rocker
ivory & choco

**rocker
cotto**

**600x
1200mm**







rocker cotto

**600x
1200mm**




 Thickness : **9mm**

 Finish: **MATT**

 HIGH STRENGTH

 ECO FRIENDLY

 RANDOM DESIGN

 LOW MAINTENANCE



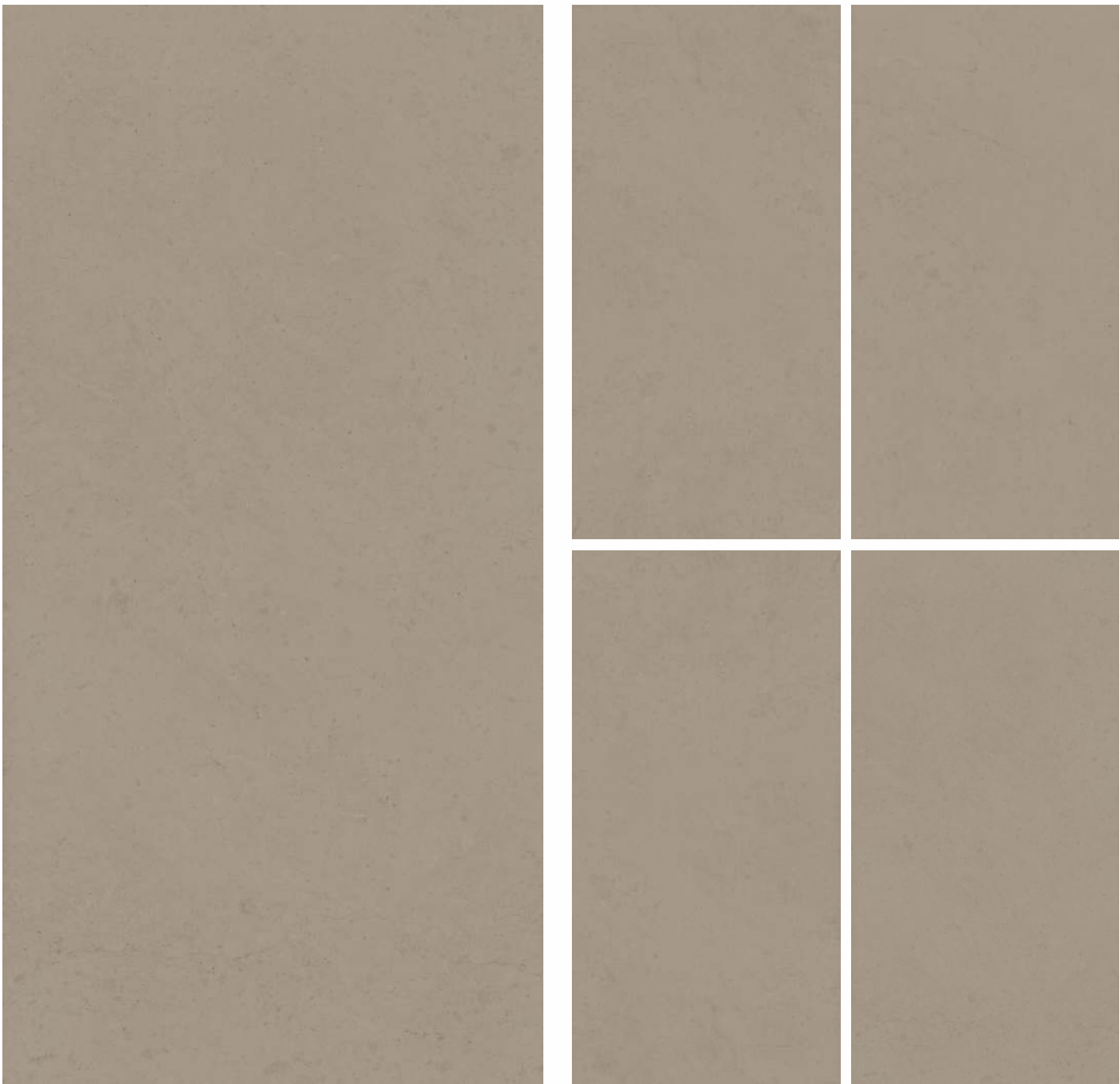
rocker
cotto



**rocker
bronze**

**600x
1200mm**







rocker bronze

**600x
1200mm**




 Thickness : **9mm**

 Finish: **MATT**

 HIGH STRENGTH

 ECO FRIENDLY

 RANDOM DESIGN

 LOW MAINTENANCE

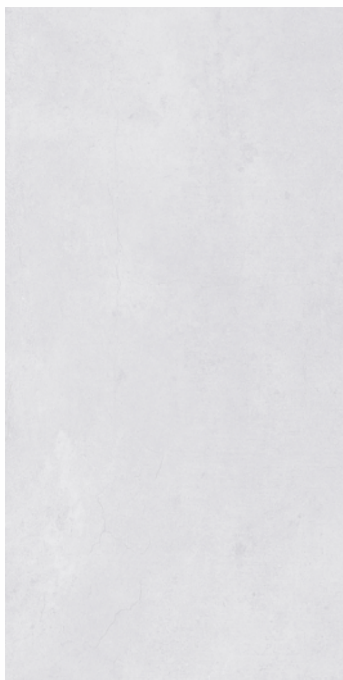
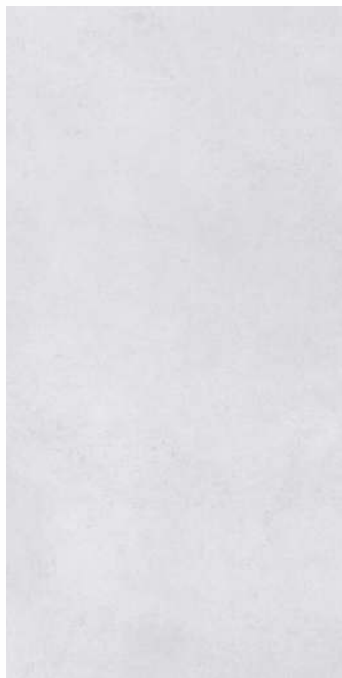
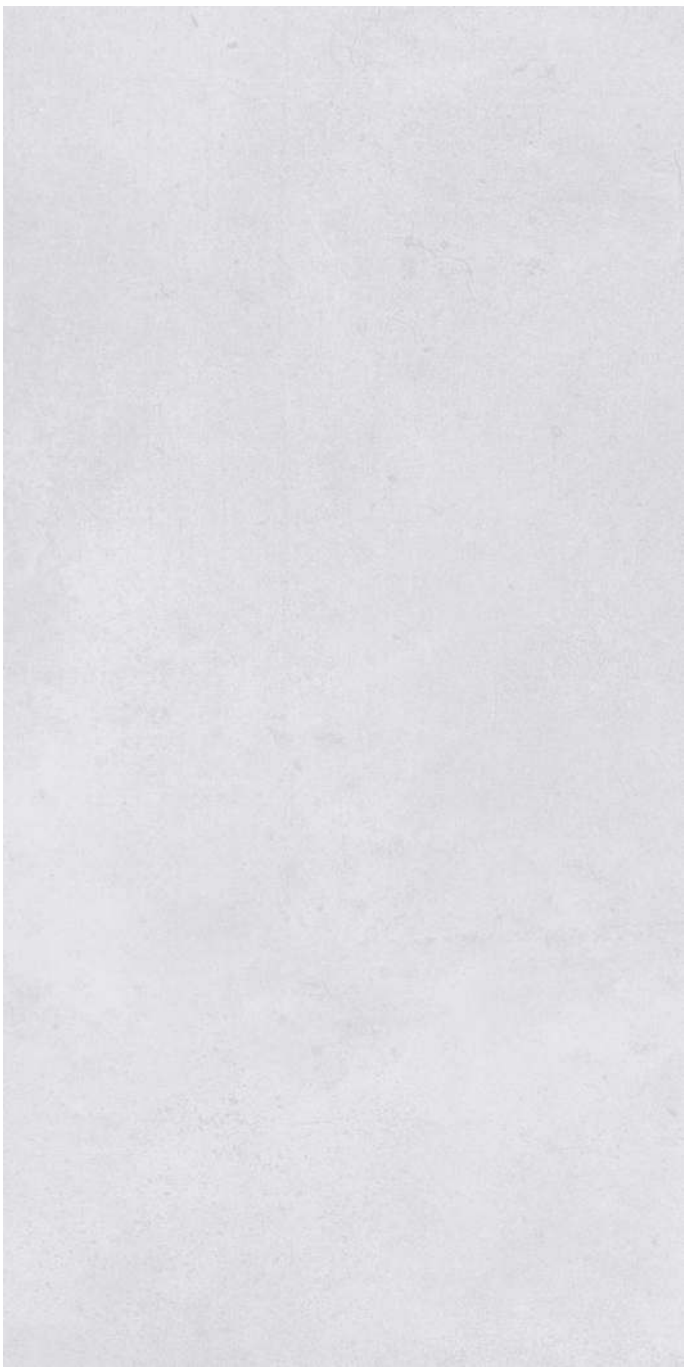


rocker
bronze

**norman
bianco**

**600x
1200mm**






norman bianco

**600x
1200mm**




 Thickness : **9mm**

 Finish: **MATT**

 HIGH STRENGTH

 ECO FRIENDLY

 RANDOM DESIGN

 LOW MAINTENANCE



norman
bianco & grey

**norman
grey**

**600x
1200mm**






norman grey

600x
1200mm



 Thickness : **9mm**

 Finish: **MATT**



HIGH STRENGTH



ECO FRIENDLY



RANDOM DESIGN



LOW MAINTENANCE



norman
bianco & grey

Technical Specifications

CHARACTERISTICS	STANDARD AS PER ISO-13006/EN14411 GROUP B1A	OUR VALUE OF PGVT	OUR VALUE OF GVT	TEST METHOD
REGULATORY PROPERTIES				
Deviation in length & width	±0.5 %	±0.1 %	±0.1 %	ISO-10545-2
Deviation in thickness	±5.0 %	±4.0 %	±4.0 %	ISO-10545-2
Straightness in side	±0.5 %	±0.1 %	±0.1 %	ISO-10545-2
Rectangularity	±0.6 %	±0.1 %	±0.1 %	ISO-10545-2
Surface flatness	±0.5 %	±0.2 %	±0.2 %	ISO-10545-2
Color difference	Unaltered	No change	No change	ISO-10545-16
Glossiness	As per mfg.	Min. 90%	Min. 4%	GLOSSOMETER
SURFACE MECHANICAL PROPERTIES				
Water absorption	< 0.50 %	< 0.05 %	< 0.05 %	ISO-10545-3
Apparent density	> 2.0 g/cc	> 2.10 g/cc	> 2.10 g/cc	DIN 51082
MASSIVE MECHANICAL PROPERTIES				
Modulus of rupture	Min. 35 N/mm ²	Min. 40 N/mm ²	Min. 40 N/mm ²	ISO-10545-4
Breaking strength	Min. 1300 N	Min. 2000 N	Min. 2000 N	ISO-10545-4
Impact resistance	as per mfg.	Min. 0.55	Min. 0.55	ISO-10545-5
SURFACE MECHANICAL PROPERTIES				
Surface abrasion resistance	as per mfg.	Min. Class-3	Min. Class-4	ISO-10545-7
MOH's hardness	as per mfg.	Min. 4	Min. 5	EN 101
THERMO HYDROMETRIC PROPERTIES				
Frost resistance	No damage	No damage	No damage	ISO-10545-12
Thermal shock resistance	No damage	No damage	No damage	ISO-10545-9
Moisture expansion	Nil	Nil	Nil	ISO-10545-10
Thermal expansion (COE)	Max. 9.0x10 ⁻⁶	Max. 6.5x10 ⁻⁶	Max. 6.5x10 ⁻⁶	ISO-10545-8
Crazing resistance	as per mfg.	Min. 10 Cycle	Min. 10 Cycle	ISO-10545-11
CHEMICAL PROPERTIES				
Chemical resistance	No damage	No damage	No damage	ISO-10545-13
Stain resistance	Resistant	Resistant	Resistant	ISO-10545-14
SAFETY PROPERTIES				
Slip resistance	as per mfg.	> 0.40	> 0.40	ISO-10545-17
Fire resistance	as per mfg.	Fireproof	Fireproof	N. A.
Lead & Cadmium given off by glazed tiles	as per mfg.	Doesn't yield Pb & Cd	Doesn't yield Pb & Cd	ISO-10545-15

Packing Details

Sr. No.	Size	Thickness (approx)	Pieces / Box	Area / Box (approx)	Wt. Kg. (approx)
1	600x1200 mm	9mm	2pcs.	1.44 sq. mtr.	29

Cutting Specifications

Cutting with disk

In order to do a correct cutting into one slab 12mm (1/2") it is recommended the use of segmented cutting disks and specifications as described below.

Disk diameter	RPM	Cutting speed (m/min)-(feet/min)
300 mm - 12"	2600 rpm	1/2 m/min - 4 feet/min
350 mm - 14"	2300 rpm	1/2 m/min - 4 feet/min
400 mm - 16"	1900 rpm	1/2 m/min - 4 feet/min

To ensure correct finishes, it is recommended lowering the speed at both ends to 25% 0.3m/min - 1 feet/min. If the cutting also requires beveling it is also recommend to slow the speed in the cutting path to 0.6 m/min - 2feet/min.

In order to avoid stress into the slab, it is imperative the use of cutting surfaces that are perfectly levelled and good disk refrigeration. The disk must have a direct application to the cutting edge with refrigeration liquid or water during all the operation.

For inner cutting, as it has been said before, is mandatory the prior drilling at the corners to ensure a 5mm - 3/16" radius. Therefore, the drill must have 10 mm - 6/16" diameter or more.

Water jet cutting

Before starting the waterjet cutting it is advisable to secure the surface and check the flatness of the slab on the support structure for cutting.

Unless necessary (Ex. to create a cavity), the cut must begin and finish outside the slab, always respecting 50 mm - 2" of perimeter during the cutting to avoid accumulation of stresses. The pressure should not exceed 4000 bar and the linear cutting speed should be around 0.6 m / min - 2 feet / min

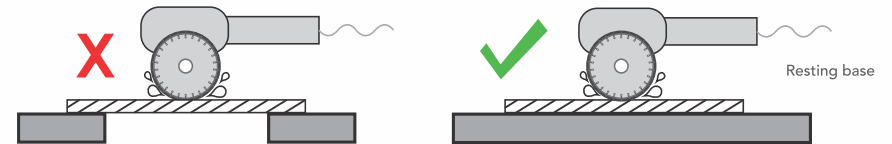
As long as the technical capacity of the cutting machine allows it, is advisable to finish all the cuts towards the edge of the slab and avoid all the endings at the central area of the slab.

Cutting stresses

In order to minimize the residual stresses in a slab it is advisable, regardless of the cutting method employed, to remove 25 mm - 1" from the total perimeter of the slab.

This not only mitigates the future stresses but also eliminates all possible stress that the material has accumulated during its manufacture, handling or transport until is finally done any operation into the slab.

Cutting



Drilling

